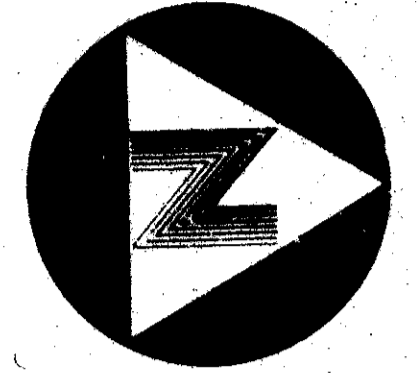
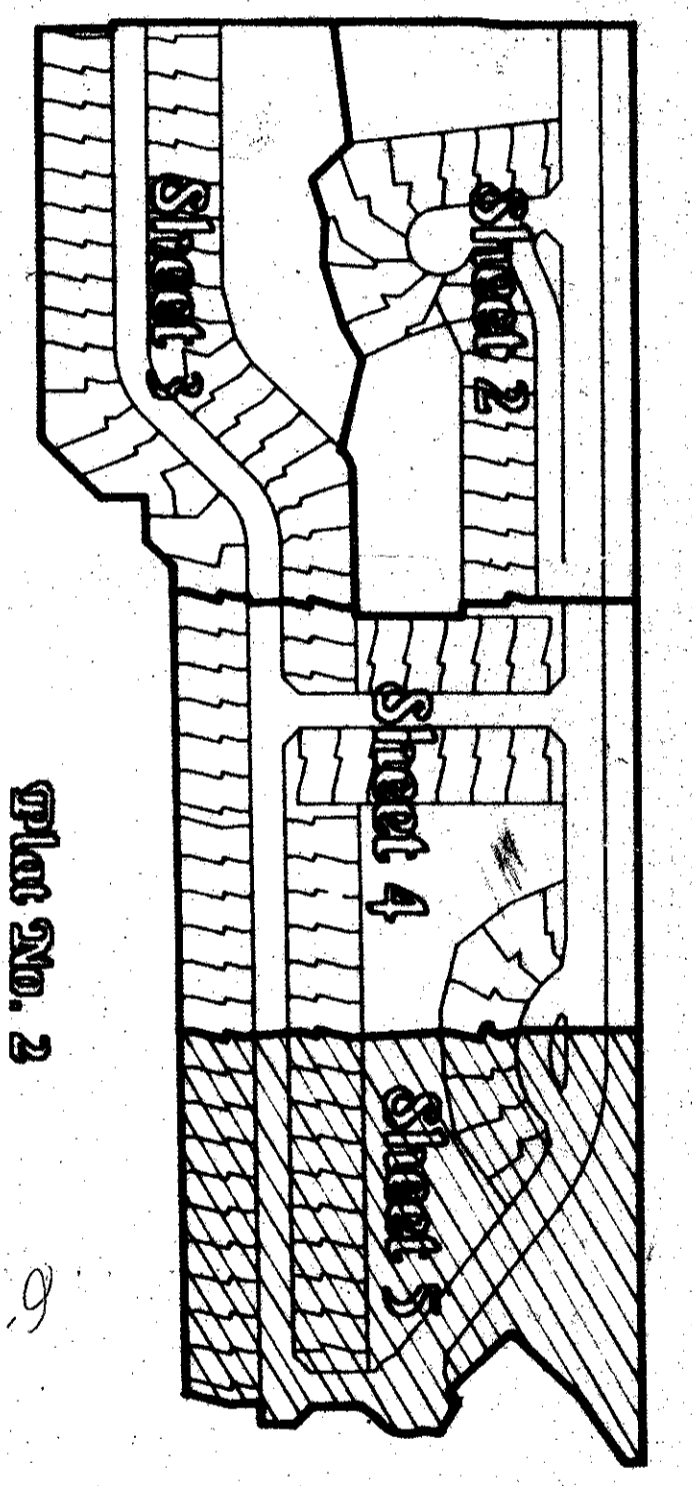


State of Florida)
 County Of Palm Beach)
 This Plat was filed for record at _____ this _____ day of _____ A.D., 1988, and duly recorded in Plat Book _____ on Pages _____ through _____
 John B. Dunkle,
 Clerk of the Circuit Court.
 By _____
 Deputy Clerk



0' 30' 60' 120'
 Graphic Scale In Feet 1"=30'



-Key Map-
Not To Scale

Plot No. 2
 Century Village West
 P.D. 36, P.P. 149-153D
 Plat 80-9

Legend:

- ⊙ Indicates A Permanent Reference Monument * 2424 (P.R.M.)
- ⊙ Indicates A Permanent Control Point * 2424 (P.C.P.)
- DE Indicates A Drainage Easement
- UE Indicates A Utility Easement
- L.M.E. Indicates A Lake Maintenance Easement
- M.E. Indicates A Maintenance Easement

MATCH LINE
(SEE SHEET 4 OF 5)

MATCH LINE
(SEE SHEET 4 OF 5)

Lake Worth Drainage District Lateral Canal C-44
 (O.R.D. 1994 Pg. 1678)

SECTION LINE - SECTION 8

The Water Management Tract, And Drainage Easement
 To Be Maintained By Brentwood Maintenance Association, Inc.
 Without Recourse To Palm Beach County

25' BUFFER EASEMENT

Palm Beach Farms Company Platted Road Right-Of-Way
 AS SHOWN ON P.B. O.R.D. 2519, Pg. 1744

-Unplatted-

BENCH MARK
 LAND SURVEYING & MAPPING, INC.
 WEST PALM BEACH, FLORIDA RIVER WOODS, FLORIDA

-Record Plat-
 Brentwood Of Boca Phases 4 & 5

This instrument was prepared by Wm. R. Van Campen, R.L.S., in and for the offices of Bench Mark Land Surveying & Mapping, Inc., 4152 W. Blue Heron Boulevard, Suite 121, Riviera Beach, FL.

OWN	SCALE	SIZE	DATE	NO. OF SHEETS	SHEET NO.
				5	5

RM 80-9
 TAZ 771
 1/27/88

61/52

